

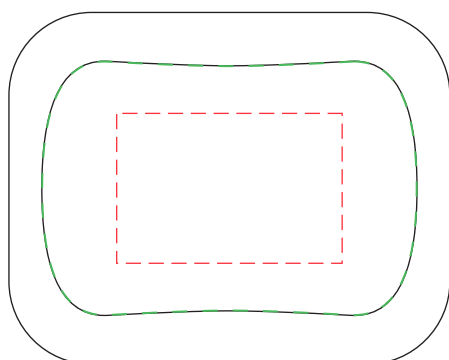
AR1389

Linz Eco TWS Earbuds

Branding Options: 4CP Digital Print

Product Size: 58 x 45 x 31 mm (charge case), 17 x 26 x 34 mm (ear buds)

Colours: Product Colour: Black



Top

4CP Branding : 15 x 10 mm (w x h)
 4CP Digital Print

LightUp Branding : 50 x 34 mm (w x h)
 Laser Engrave LightUp



Bottom



----- Extent of Branding
 (Not To Be Printed)

Please follow these artwork guidelines • Use and supply vector-based artwork • Illustrator compatible EPS or PDF with all fonts outlined • Indicate any necessary colour details with the correct PMS colour • All Pantone colours need to be supplied as Pantone Coated (PMS C) colours • All specifics need to be “embedded” in the file, i.e. no linked artwork should be provided • Bleed is crucial when printing edge to edge. Artwork must extend beyond the finished and trim size dimensions.

AR1389

Linz Eco TWS Earbuds

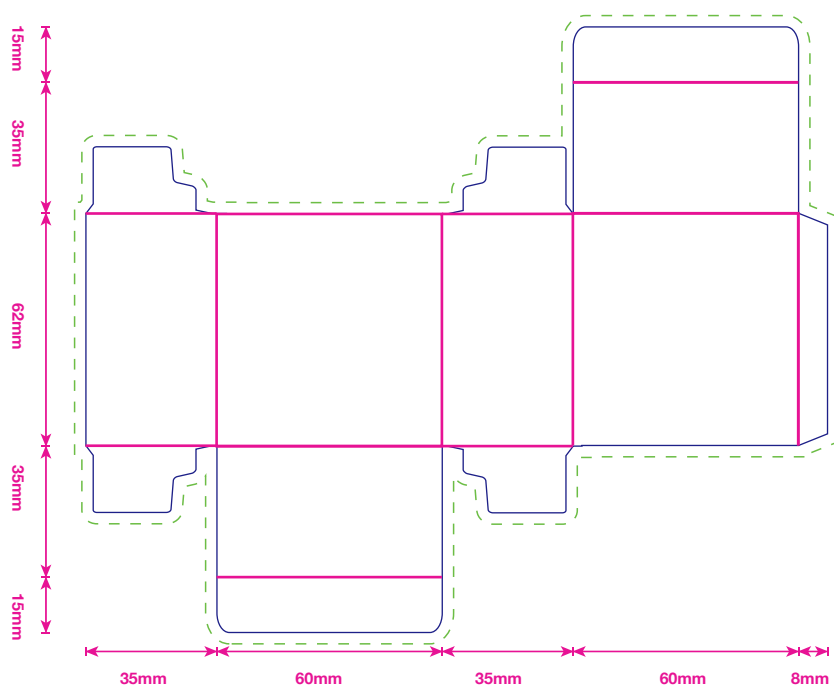
Branding Options: 4CP Digital Print

Product Size: 58 x 45 x 31 mm (charge case), 17 x 26 x 34 mm (ear buds)

Colours: Product Colour: Black

Flat size: 196 x 160 mm

Assembled dimensions : 60 x 62 x 35 mm



BLEED 
TRIM 
CREASE 

50%
10mm

Please follow these artwork guidelines • Use and supply vector-based artwork • Illustrator compatible EPS or PDF with all fonts outlined • Indicate any necessary colour details with the correct PMS colour • All Pantone colours need to be supplied as Pantone Coated (PMS C) colours • All specifics need to be "embedded" in the file, i.e. no linked artwork should be provided • Bleed is crucial when printing edge to edge. Artwork must extend beyond the finished and trim size dimensions.