

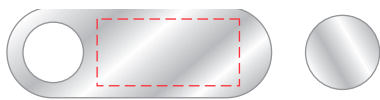
AR725C

WebCam Cover Swivel

Branding Options: 4CP Digital Print

Product Size: 34.5 x 12 x 1.5 mm

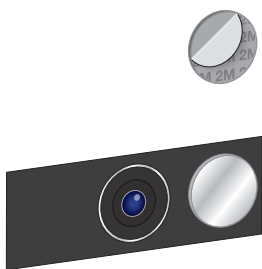
Colour: Product Colour: Black plastic, Silver metal



Front

Print : 19 x 9 mm
4Cp Direct Digital Print

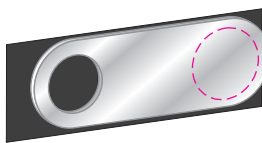
Aluminium Swivel Body
or
Black Plastic Swivel Body



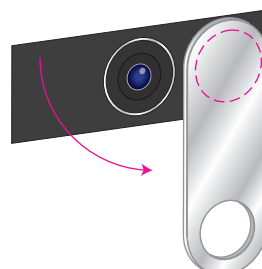
1 **Peel Backing**



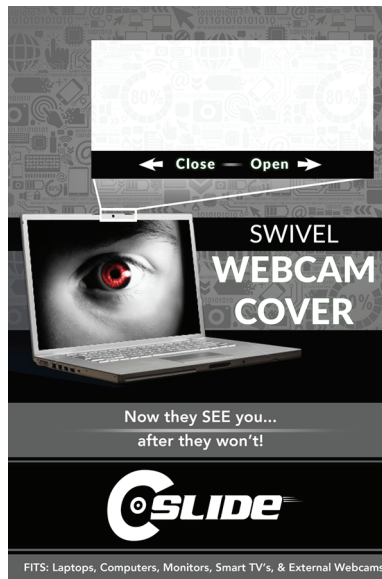
2 **Attach Magnet**



3 **Attach Swivel to Magnet**



4 **Swivel to OPEN**



Packaging Front @ 50%



Packaging Rear @ 50%

100%

10mm

Please follow these artwork guidelines • Use and supply vector-based artwork • Illustrator compatible EPS or PDF with all fonts outlined • Indicate any necessary colour details with the correct PMS colour • All Pantone colours need to be supplied as Pantone Coated (PMS C) colours • All specifics need to be "embedded" in the file, i.e. no linked artwork should be provided • Bleed is crucial when printing edge to edge. Artwork must extend beyond the finished and trim size dimensions.

AR725C

WebCam Cover Swivel

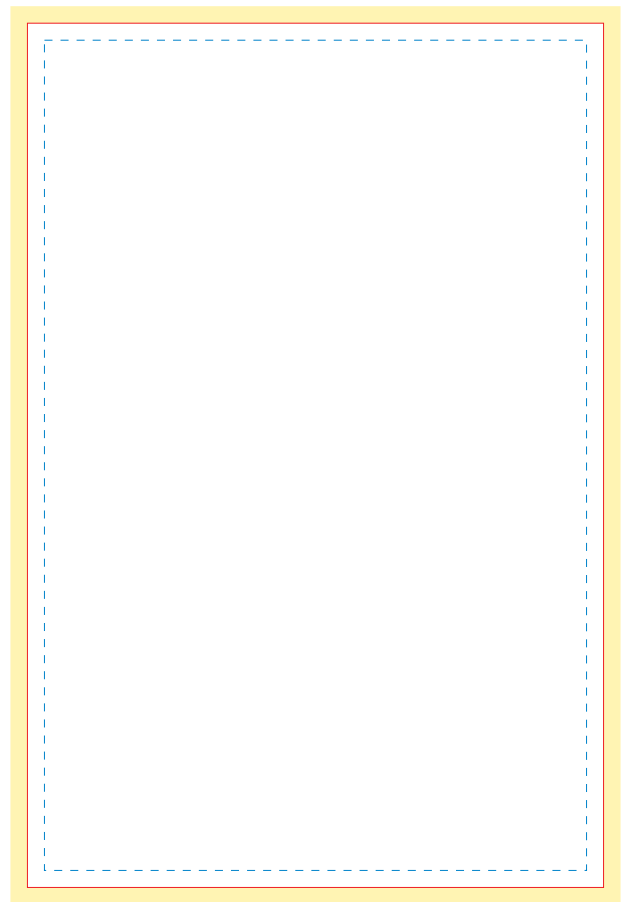
Branding Options: 4CP Digital Print

Product Size: 34.5 x 12 x 1.5 mm

Colour: Product Colour: Black plastic, Silver metal



Custom Backing Card Front
Size : 101.6 x 152.4 mm
4CP Print



Custom Backing Card Rear
Size : 101.6 x 152.4 mm
4CP Print

-  Safe Area
-  Trim Line
-  Bleed (3mm)
-  Blister Position (non-printing)



Please follow these artwork guidelines • Use and supply vector-based artwork • Illustrator compatible EPS or PDF with all fonts outlined • Indicate any necessary colour details with the correct PMS colour • All Pantone colours need to be supplied as Pantone Coated (PMS C) colours • All specifics need to be "embedded" in the file, i.e. no linked artwork should be provided • Bleed is crucial when printing edge to edge. Artwork must extend beyond the finished and trim size dimensions.

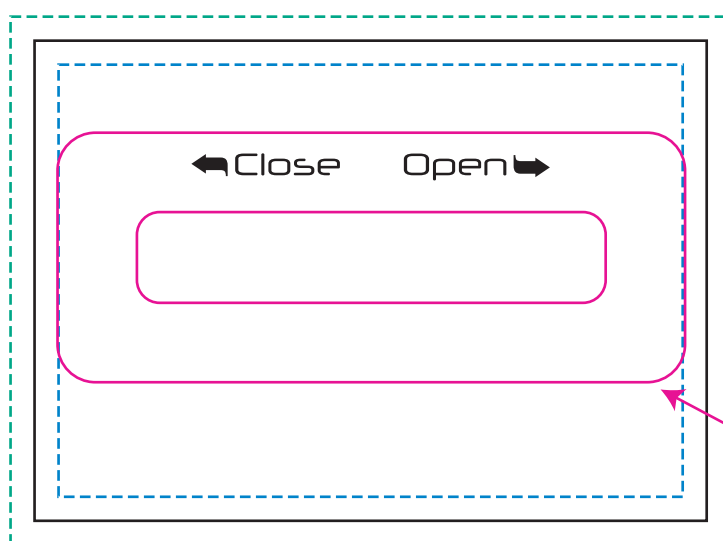
AR725C

WebCam Cover Swivel

Branding Options: 4CP Digital Print

Product Size: 34.5 x 12 x 1.5 mm

Colour: Product Colour: Black plastic, Silver metal



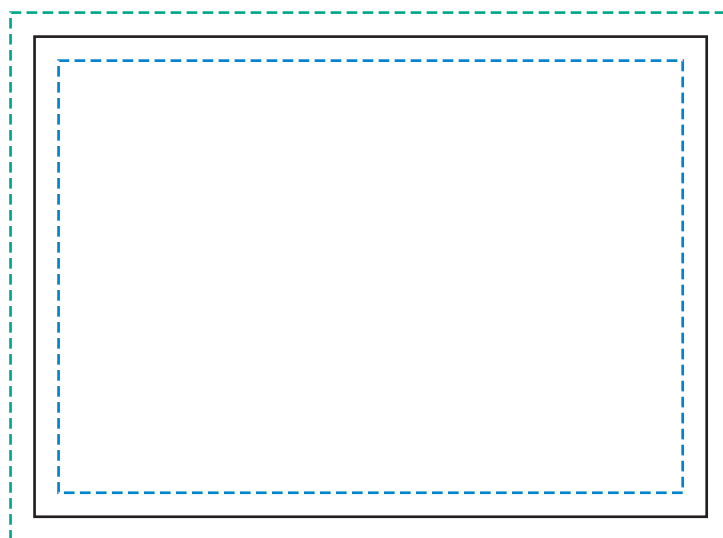
Backing Card Front
Card Print : 88.9 x 63.5 mm
4 CP Print

Bleed of 3.2 mm Shown

----- Print Safe Area

----- Bleed

Blister Packaging Footprint
Exclude printing from this area



Backing Card Rear
Card Print : 88.9 x 63.5 mm
4 CP Print

Bleed of 3.2 mm Shown

----- Print Safe Area

----- Bleed



Please follow these artwork guidelines • Use and supply vector-based artwork • Illustrator compatible EPS or PDF with all fonts outlined • Indicate any necessary colour details with the correct PMS colour • All Pantone colours need to be supplied as Pantone Coated (PMS C) colours • All specifics need to be “embedded” in the file, i.e. no linked artwork should be provided • Bleed is crucial when printing edge to edge. Artwork must extend beyond the finished and trim size dimensions.