

**AR880**

**Parma 3n1 Light Up Flat Charge Cable**

**Print Process:** Light-Up Logo, Pad Print, 4CP Digital Print

**Product Size:** Cable Head: 30 x 18 x 10 mm, Cable Length: 15 cm (AR880-15), Cable Length: 100 cm (AR880-100)

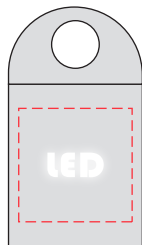
**Colours:** Product Colour: Black/Black & White (LED), Black/White & White (LED), Black/Blue & Blue (LED), Black/Red & Red (LED). Refer to our PDF template. Blue (PMS 2925C), Red (PMS186C)



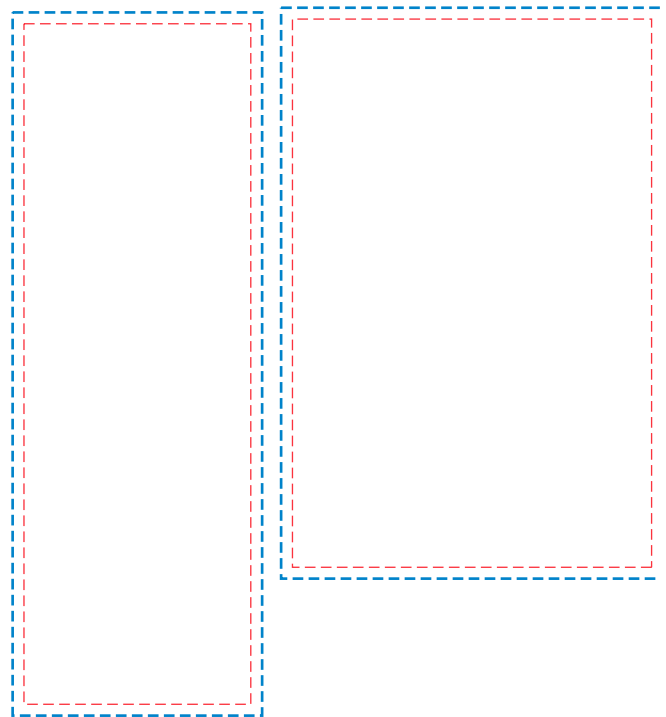
Front  
 Print : 15 x 15 mm  
 Engraved Light-up



Rear  
 Print : 15 x 15 mm  
 4CP Direct Digital  
 Pad Print



LED Colour  
 White (Light Up Logo)



AR880-1 Backing Card  
 Print : 60 x 180 mm  
 (Bleed 3mm) ---  
 4CP Print - - -

AR880-2 Backing Card  
 Print : 95 x 145 mm  
 (Bleed 3mm) ---  
 4CP Print - - -



Please follow these artwork guidelines • Use and supply vector-based artwork • Illustrator compatible EPS or PDF with all fonts outlined • Indicate any necessary colour details with the correct PMS colour • All Pantone colours need to be supplied as Pantone Coated (PMS C) colours • All specifics need to be "embedded" in the file, i.e. no linked artwork should be provided • Bleed is crucial when printing edge to edge. Artwork must extend beyond the finished and trim size dimensions.

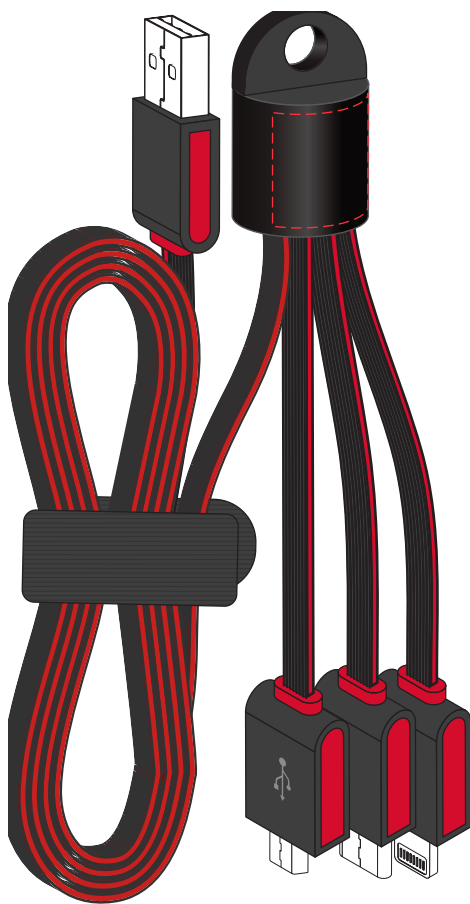
**AR880**

**Parma 3n1 Light Up Flat Charge Cable**

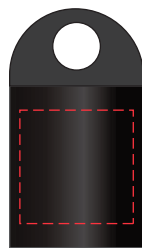
**Print Process:** Light-Up Logo, Pad Print, 4CP Digital Print

**Product Size:** Cable Head: 30 x 18 x 10 mm, Cable Length: 15 cm (AR880-15), Cable Length: 100 cm (AR880-100)

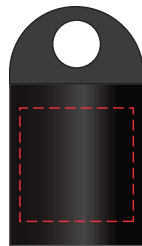
**Colours:** Product Colour: Black/Black & White (LED), Black/White & White (LED), Black/Blue & Blue (LED), Black/Red & Red (LED). Refer to our PDF template. Blue (PMS 2925C), Red (PMS186C)



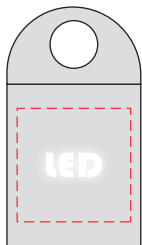
Red PMS 186C



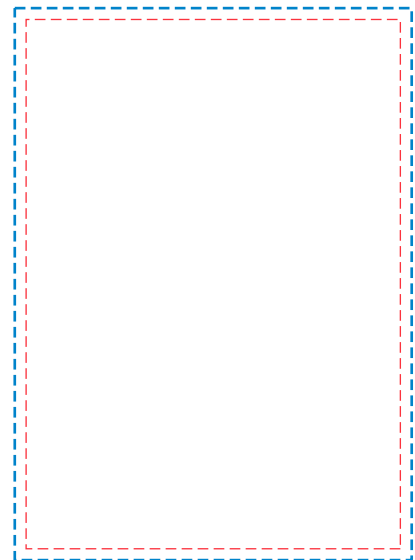
Front  
 Print : 15 x 15 mm  
 Engraved Light-up



Rear  
 Print : 15 x 15 mm  
 4CP Direct Digital  
 Pad Print



LED Colour  
 White (Light Up Logo)



AR880-100 Backing Card  
 Print : 99 x 140 mm  
 Bleed 3mm (105 X 46mm)  
 4CP Print



Please follow these artwork guidelines • Use and supply vector-based artwork • Illustrator compatible EPS or PDF with all fonts outlined • Indicate any necessary colour details with the correct PMS colour • All Pantone colours need to be supplied as Pantone Coated (PMS C) colours • All specifics need to be "embedded" in the file, i.e. no linked artwork should be provided • Bleed is crucial when printing edge to edge. Artwork must extend beyond the finished and trim size dimensions.

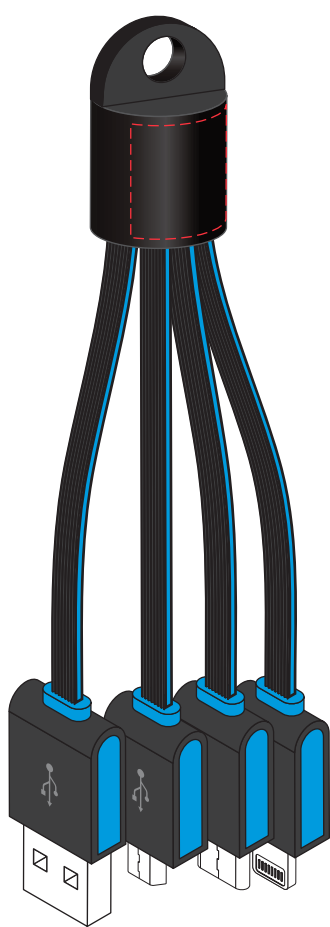
**AR880**

**Parma 3n1 Light Up Flat Charge Cable**

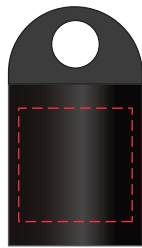
**Print Process:** Light-Up Logo, Pad Print, 4CP Digital Print

**Product Size:** Cable Head: 30 x 18 x 10 mm, Cable Length: 15 cm (AR880-15), Cable Length: 100 cm (AR880-100)

**Colours:** Product Colour: Black/Black & White (LED), Black/White & White (LED), Black/Blue & Blue (LED), Black/Red & Red (LED). Refer to our PDF template. Blue (PMS 2925C), Red (PMS186C)



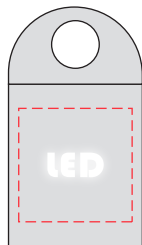
Blue PMS 2925C



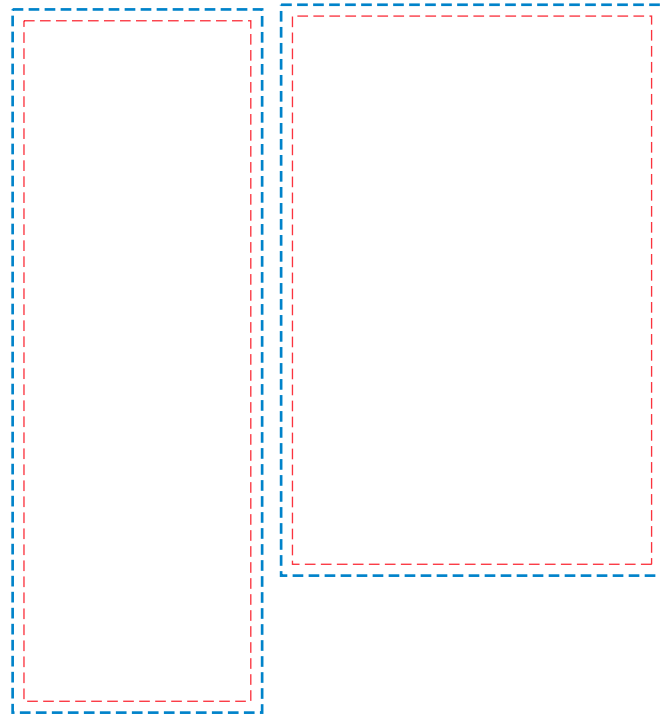
Front  
 Print : 15 x 15 mm  
 Engraved Light-up



Rear  
 Print : 15 x 15 mm  
 4CP Direct Digital  
 Pad Print



LED Colour  
 White (Light Up Logo)



AR880-1 Backing Card  
 Print : 60 x 180 mm  
 (Bleed 3mm) ---  
 4CP Print ---

AR880-2 Backing Card  
 Print : 95 x 145 mm  
 (Bleed 3mm) ---  
 4CP Print ---



Please follow these artwork guidelines • Use and supply vector-based artwork • Illustrator compatible EPS or PDF with all fonts outlined • Indicate any necessary colour details with the correct PMS colour • All Pantone colours need to be supplied as Pantone Coated (PMS C) colours • All specifics need to be "embedded" in the file, i.e. no linked artwork should be provided • Bleed is crucial when printing edge to edge. Artwork must extend beyond the finished and trim size dimensions.

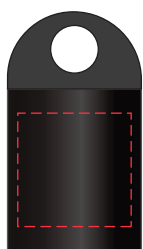
## AR880

### Parma 3n1 Light Up Flat Charge Cable

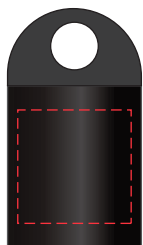
**Print Process:** Light-Up Logo, Pad Print, 4CP Digital Print

**Product Size:** Cable Head: 30 x 18 x 10 mm, Cable Length: 15 cm (AR880-15), Cable Length: 100 cm (AR880-100)

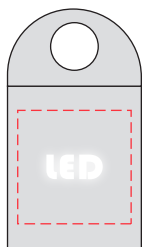
**Colours:** Product Colour: Black/Black & White (LED), Black/White & White (LED), Black/Blue & Blue (LED), Black/Red & Red (LED). Refer to our PDF template. Blue (PMS 2925C), Red (PMS186C)



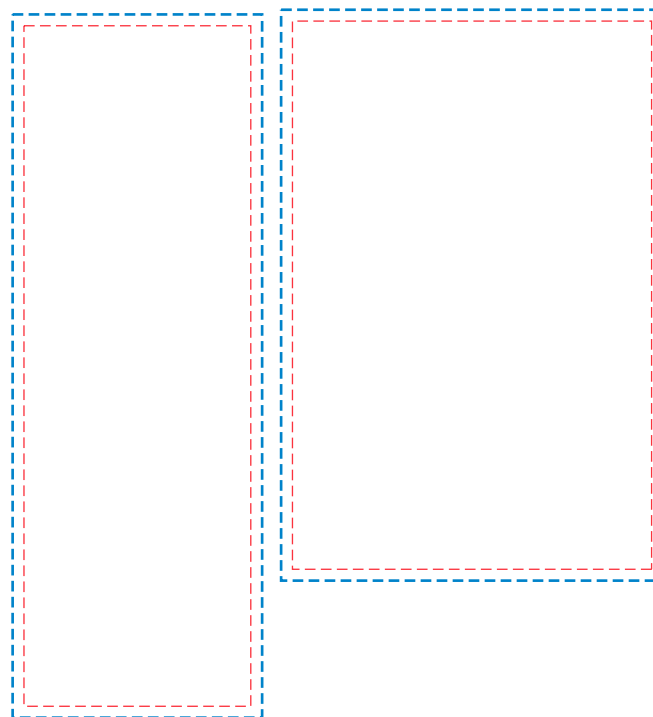
Front  
 Print : 15 x 15 mm  
 Engraved Light-up



Rear  
 Print : 15 x 15 mm  
 4CP Direct Digital  
 Pad Print

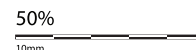


LED Colour  
 White (Light Up Logo)



AR880-1 Backing Card  
 Print : 60 x 180 mm  
 (Bleed 3mm) ---  
 4CP Print - - -

AR880-2 Backing Card  
 Print : 95 x 145 mm  
 (Bleed 3mm) ---  
 4CP Print - - -



Please follow these artwork guidelines • Use and supply vector-based artwork • Illustrator compatible EPS or PDF with all fonts outlined • Indicate any necessary colour details with the correct PMS colour • All Pantone colours need to be supplied as Pantone Coated (PMS C) colours • All specifics need to be "embedded" in the file, i.e. no linked artwork should be provided • Bleed is crucial when printing edge to edge. Artwork must extend beyond the finished and trim size dimensions.

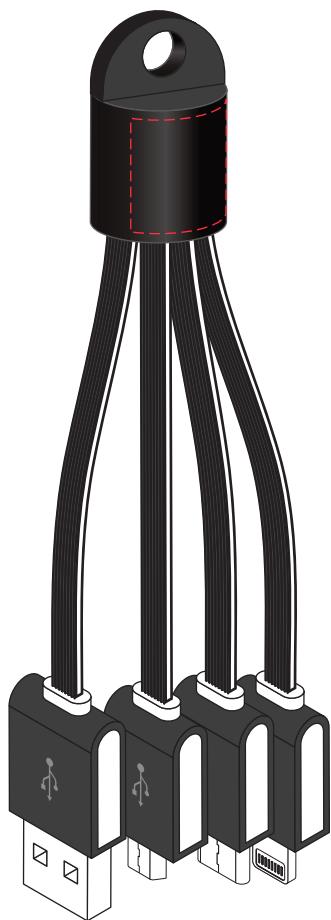
**AR880**

**Parma 3n1 Light Up Flat Charge Cable**

**Print Process:** Light-Up Logo, Pad Print, 4CP Digital Print

**Product Size:** Cable Head: 30 x 18 x 10 mm, Cable Length: 15 cm (AR880-15), Cable Length: 100 cm (AR880-100)

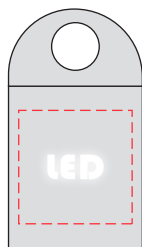
**Colours:** Product Colour: Black/Black & White (LED), Black/White & White (LED), Black/Blue & Blue (LED), Black/Red & Red (LED). Refer to our PDF template. Blue (PMS 2925C), Red (PMS186C)



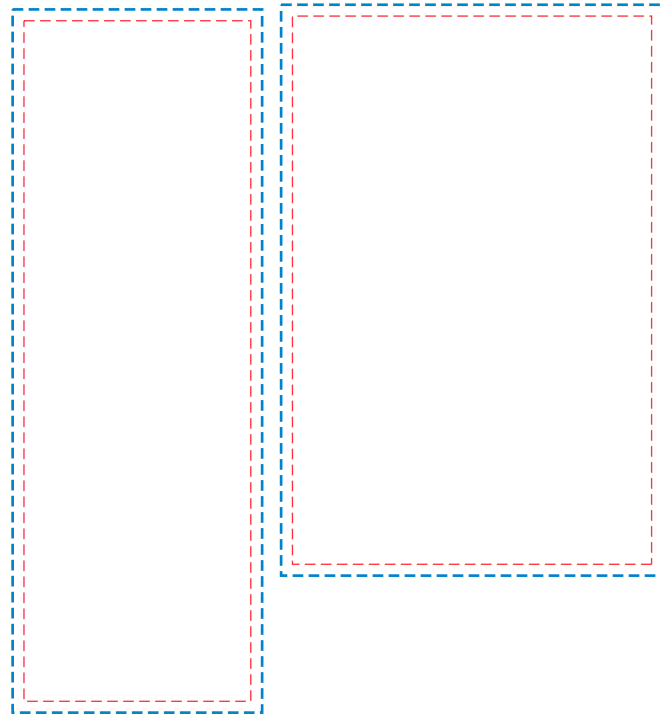
Front  
 Print : 15 x 15 mm  
 Engraved Light-up



Rear  
 Print : 15 x 15 mm  
 4CP Direct Digital  
 Pad Print



LED Colour  
 White (Light Up Logo)



AR880-1 Backing Card  
 Print : 60 x 180 mm  
 (Bleed 3mm) ---  
 4CP Print - - -



AR880-2 Backing Card  
 Print : 95 x 145 mm  
 (Bleed 3mm) ---  
 4CP Print - - -



Please follow these artwork guidelines • Use and supply vector-based artwork • Illustrator compatible EPS or PDF with all fonts outlined • Indicate any necessary colour details with the correct PMS colour • All Pantone colours need to be supplied as Pantone Coated (PMS C) colours • All specifics need to be "embedded" in the file, i.e. no linked artwork should be provided • Bleed is crucial when printing edge to edge. Artwork must extend beyond the finished and trim size dimensions.

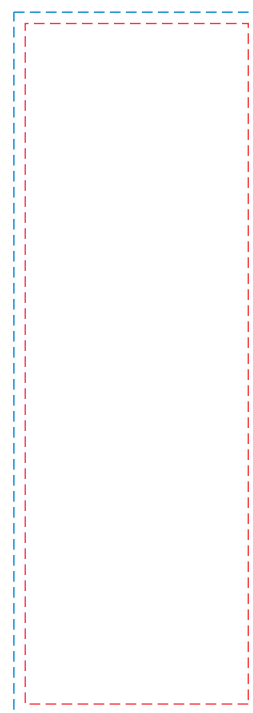
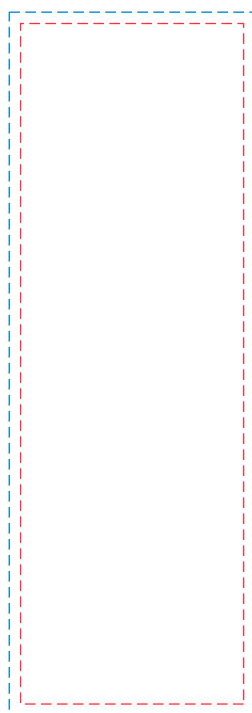
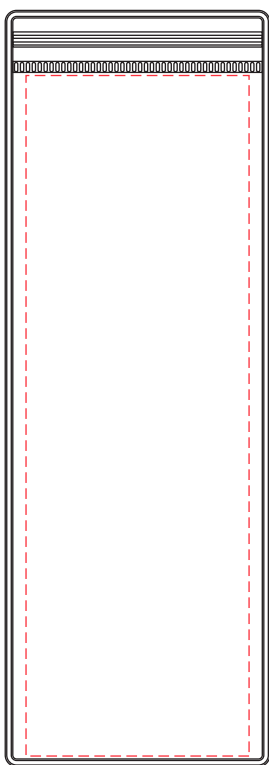
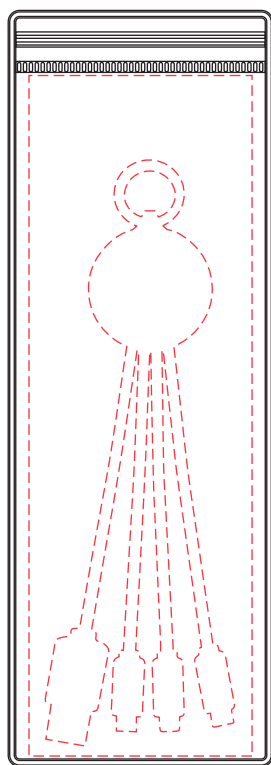
**AR880**

**Parma 3n1 Light Up Flat Charge Cable**

**Print Process:** Light-Up Logo, Pad Print, 4CP Digital Print

**Product Size:** Cable Head: 30 x 18 x 10 mm, Cable Length: 15 cm (AR880-15), Cable Length: 100 cm (AR880-100)

**Colours:** Product Colour: Black/Black & White (LED), Black/White & White (LED), Black/Blue & Blue (LED), Black/Red & Red (LED). Refer to our PDF template. Blue (PMS 2925C), Red (PMS186C)



Front

Print : 59 x 180 mm  
 4 Colour Process  
 (Allow 3 mm Bleed)

Rear

Print : 59 x 180 mm  
 4 Colour Process  
 (Allow 3 mm Bleed)

Front Insert

Print : 59 x 180 mm --  
 4 Colour Process  
 3 mm Bleed --

Rear Insert

Print : 59 x 180 mm --  
 4 Colour Process  
 3 mm Bleed --



Please follow these artwork guidelines • Use and supply vector-based artwork • Illustrator compatible EPS or PDF with all fonts outlined • Indicate any necessary colour details with the correct PMS colour • All Pantone colours need to be supplied as Pantone Coated (PMS C) colours • All specifics need to be "embedded" in the file, i.e. no linked artwork should be provided • Bleed is crucial when printing edge to edge. Artwork must extend beyond the finished and trim size dimensions.

**AR880**

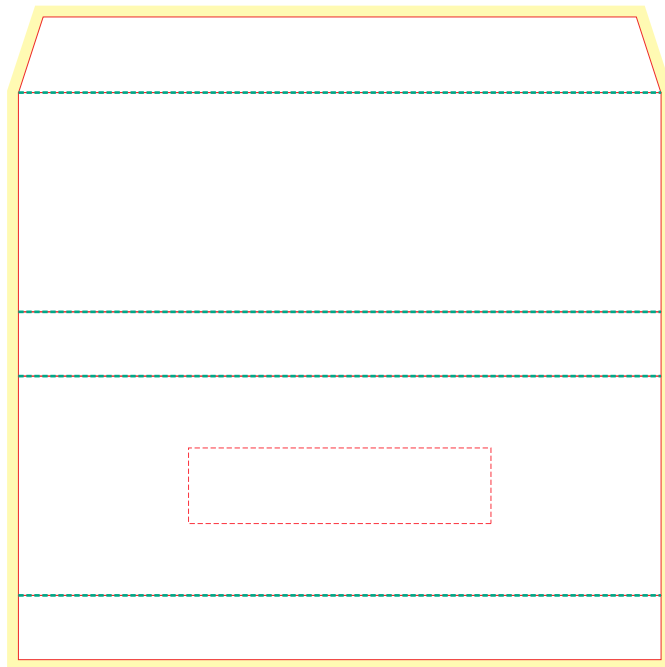
**Parma 3n1 Light Up Flat Charge Cable**

**Print Process:** Light-Up Logo, Pad Print, 4CP Digital Print

**Product Size:** Cable Head: 30 x 18 x 10 mm, Cable Length: 15 cm (AR880-15), Cable Length: 100 cm (AR880-100)

**Colours:** Product Colour: Black/Black & White (LED), Black/White & White (LED), Black/Blue & Blue (LED), Black/Red & Red (LED). Refer to our PDF template. Blue (PMS 2925C), Red (PMS186C)

**Box Sleeve**

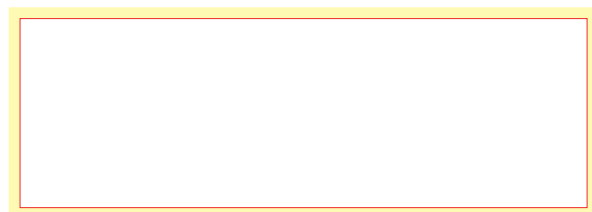


Custom Box Sleeve  
 170mm x 58mm x 17mm  
 4CP Print

Front  
 Print : 80 x 20mm  
 Foil Stamping



**Tray Inset**



Custom Box Inset  
 150mm x 50mm  
 4CP Print

— Dye Line  
 — Bleed (3mm)  
 - - - Folds



Please follow these artwork guidelines • Use and supply vector-based artwork • Illustrator compatible EPS or PDF with all fonts outlined • Indicate any necessary colour details with the correct PMS colour • All Pantone colours need to be supplied as Pantone Coated (PMS C) colours • All specifics need to be "embedded" in the file, i.e. no linked artwork should be provided • Bleed is crucial when printing edge to edge. Artwork must extend beyond the finished and trim size dimensions.

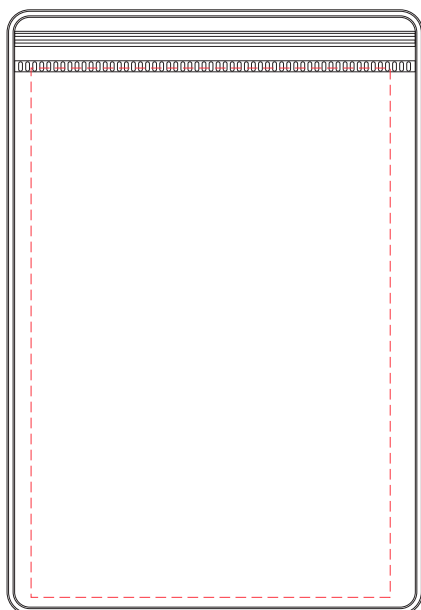
## AR880

### Parma 3n1 Light Up Flat Charge Cable

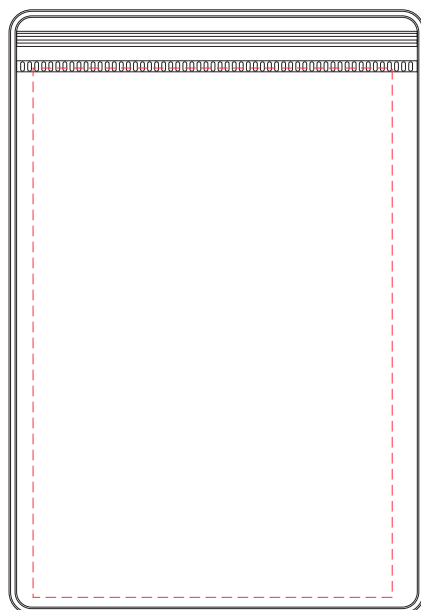
**Print Process:** Light-Up Logo, Pad Print, 4CP Digital Print

**Product Size:** Cable Head: 30 x 18 x 10 mm, Cable Length: 15 cm (AR880-15), Cable Length: 100 cm (AR880-100)

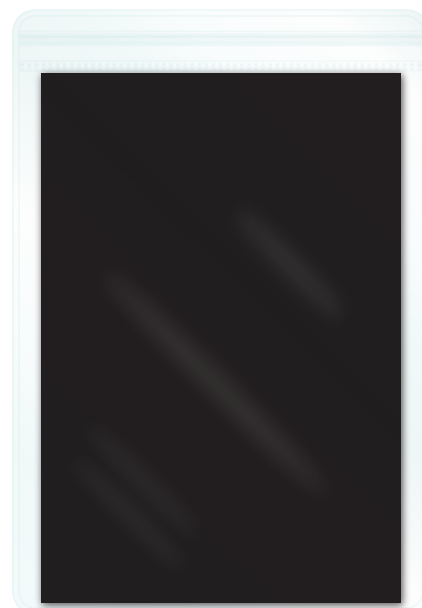
**Colours:** Product Colour: Black/Black & White (LED), Black/White & White (LED), Black/Blue & Blue (LED), Black/Red & Red (LED). Refer to our PDF template. Blue (PMS 2925C), Red (PMS186C)



Front  
Print : 95 x 140 mm  
4 Colour Process  
(3 mm Bleed)



Rear  
Print : 95 x 140 mm  
4 Colour Process  
(3 mm Bleed)



50%

10mm

Please follow these artwork guidelines • Use and supply vector-based artwork • Illustrator compatible EPS or PDF with all fonts outlined • Indicate any necessary colour details with the correct PMS colour • All Pantone colours need to be supplied as Pantone Coated (PMS C) colours • All specifics need to be "embedded" in the file, i.e. no linked artwork should be provided • Bleed is crucial when printing edge to edge. Artwork must extend beyond the finished and trim size dimensions.